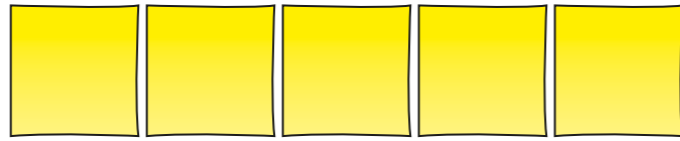
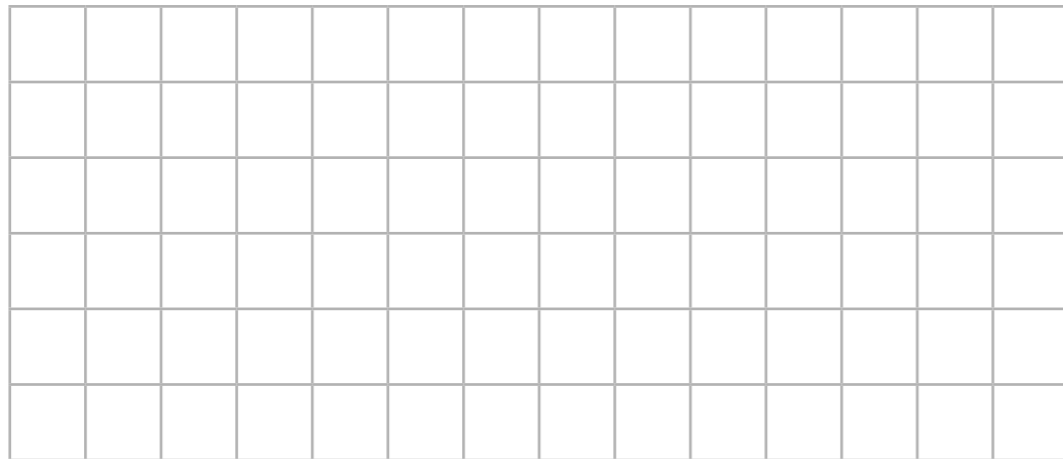


- 1 a) Use five square sticky notes or square shapes.



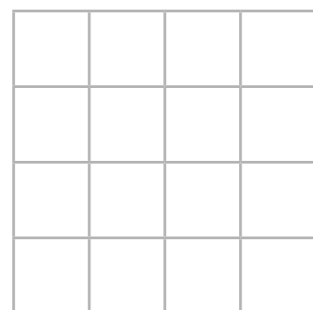
Make as many different rectilinear shapes with the squares as you can.

- b) Draw three of your shapes.

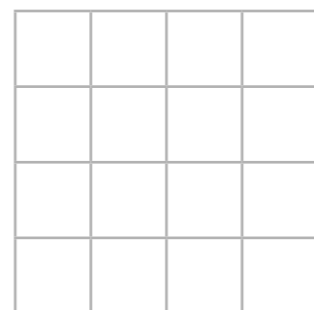


- 2 Draw shapes with the given areas.

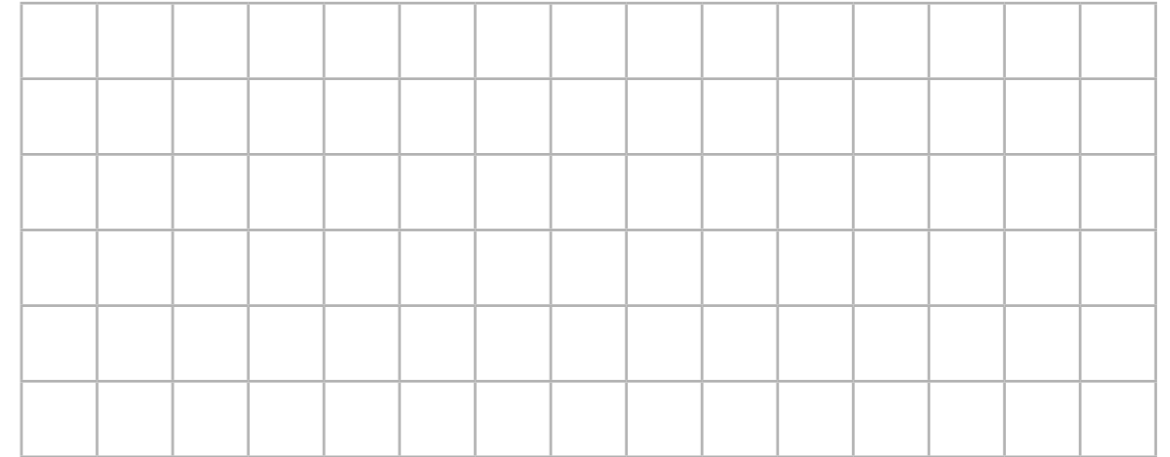
- a) area = 9 squares



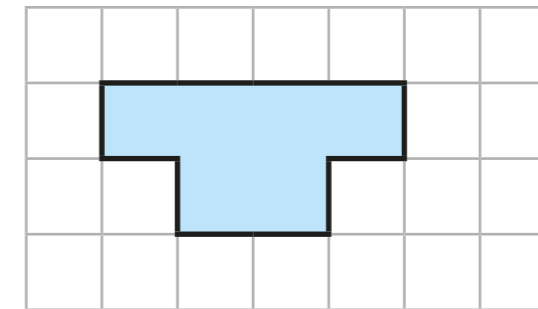
- b) area = 13 squares



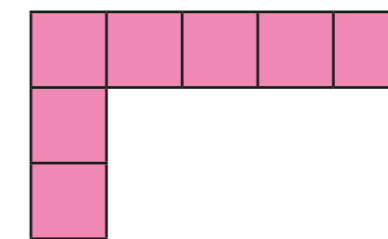
- 3 Draw two different rectilinear shapes, each with an area of 11 squares.



- 4 Shade more squares to make the area of the shape 14 squares.



- 5 a) Add squares to the shape to make it into a square.

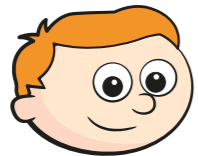


- b) What is the area of the square you have drawn?

squares



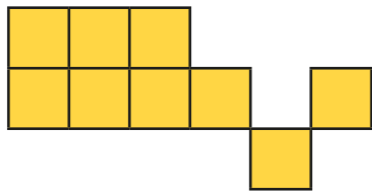
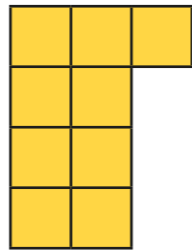
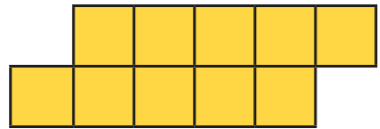
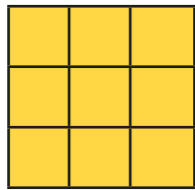
6 Ron draws a shape.



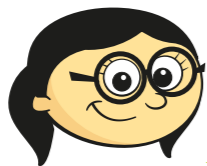
My shape has an area of 9 squares and is rectilinear.

Which shapes could be Ron's?

Tick your answers.



7



I cannot make a large square using an even number of smaller squares.

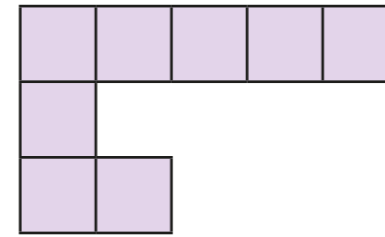
Is Annie correct? _____

Draw a picture to support your answer.

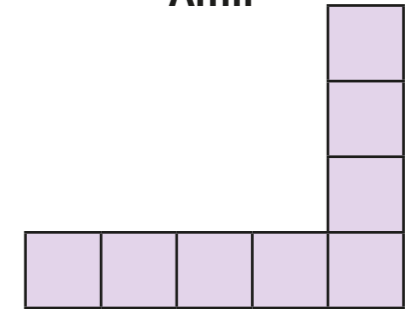


8 Esther and Amir each draw a rectilinear shape.

Esther



Amir



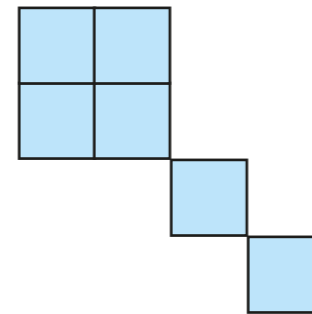
My shape is different from Esther's, but it has the same area.



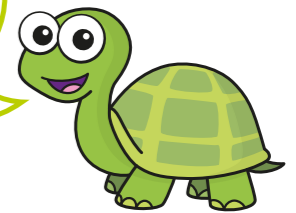
Is Amir correct? _____

Explain your answer.

9 Tiny draws a shape.



I have drawn a rectilinear shape with an area of 6 squares.



Is Tiny correct? _____

Explain your answer.

